

# CryoVEx 2008

## Data processing progress report



Stefan Hendricks, AWI

Veit Helm, AWI

Christian Haas, University of Edmonton



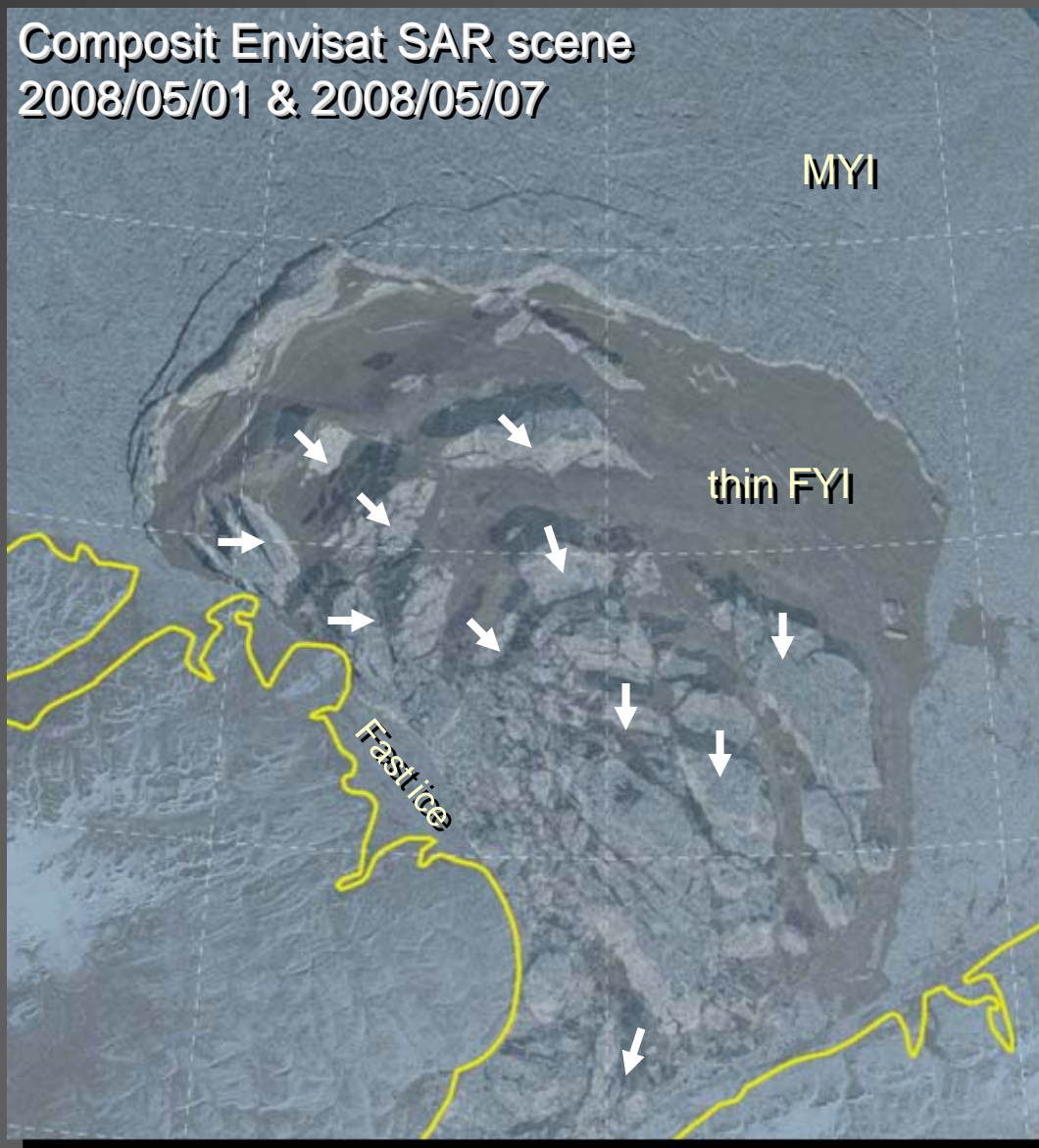
UNIVERSITY OF  
ALBERTA







# Sea Ice Conditions



# Sea Ice Conditions



# Main Objectives

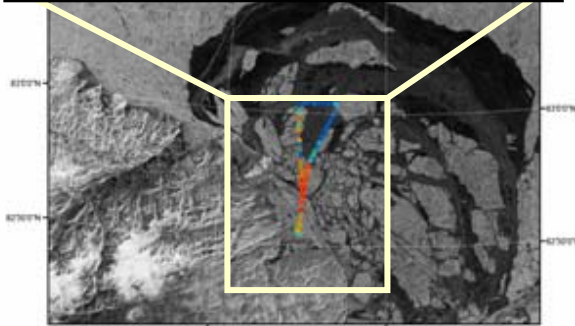
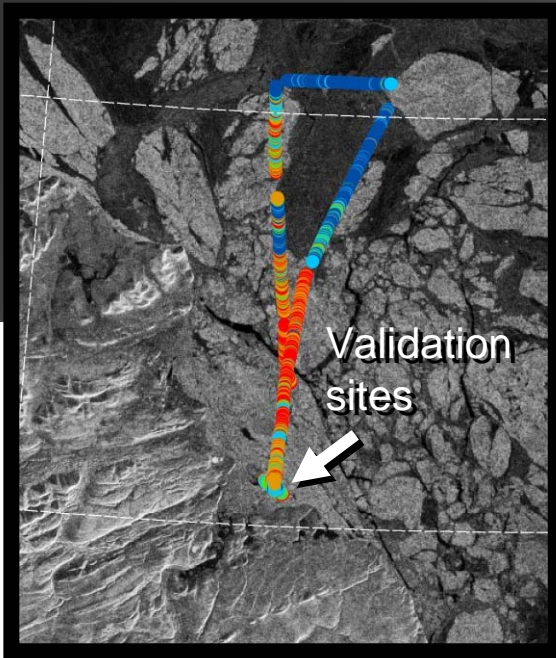
- Coincident EM thickness and freeboard (laser & radar) datasets
- First-year ice and multi-year ice validation site
- (AUV Sonar ridge site, DAMOCLES)

**Table 1.1.:** AEM Flights performed during CryoVEx 2008 sea ice field campaign

<i>Date</i>	<i>#</i>	<i>Description</i>	<i>Data</i>
2008/05/01	1	Short test flight for test of pilot altimeter display	–
2008/05/01	2	Flight north over mixed FYI/MYI zone, Survey of CryoVEx validation sites	✓
2008/05/02	1	Coincident flight with aircraft in MYI zone along northward profile. Refueling stop for range increase	✓
2008/05/07	1	Test flight to check sensor behavior under bad weather conditions (precipitation)	–

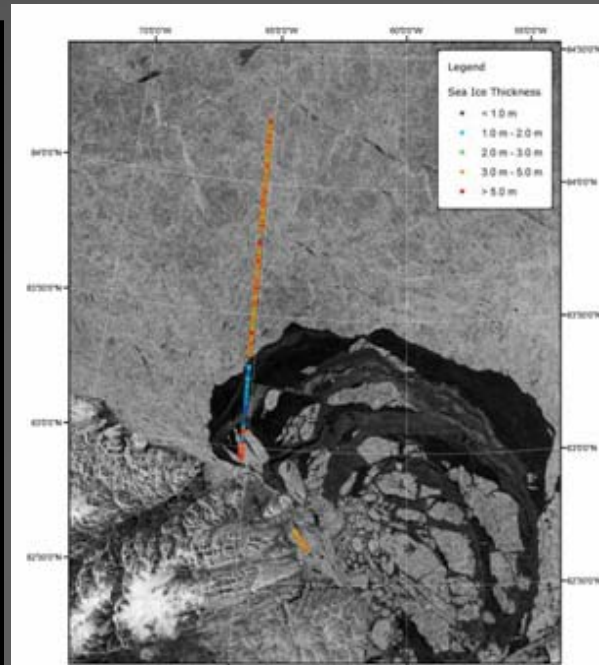


# Airborne EM field program



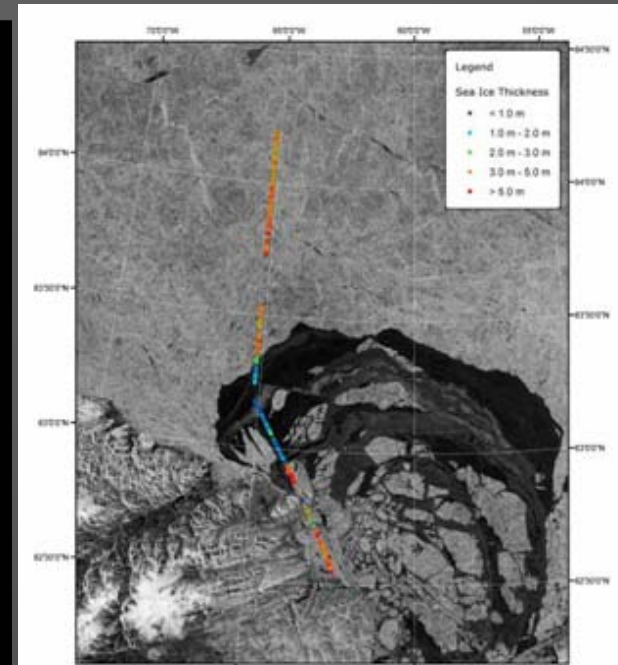
ENVISAT WSM  
2008/05/01  
17:09:28

EM Bird Track  
2008/05/01  
19:25:31 - 21:00:01



ENVISAT WSM  
2008/05/02  
23:16:18

EM Bird Track (northbound)  
2008/05/02  
20:49:47 - 21:52:42

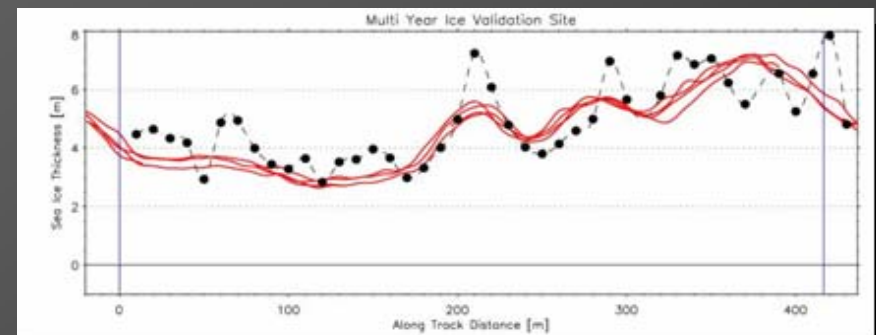
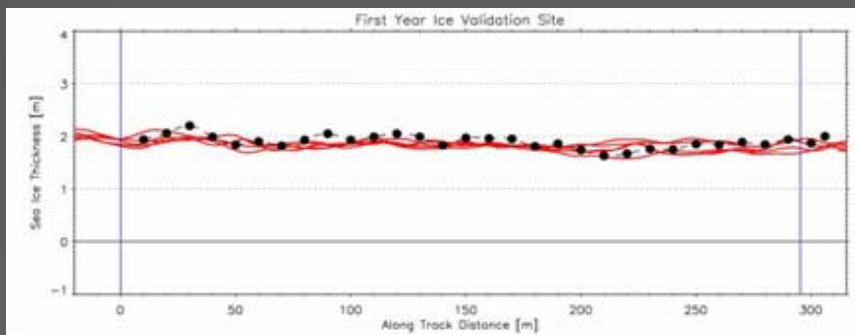
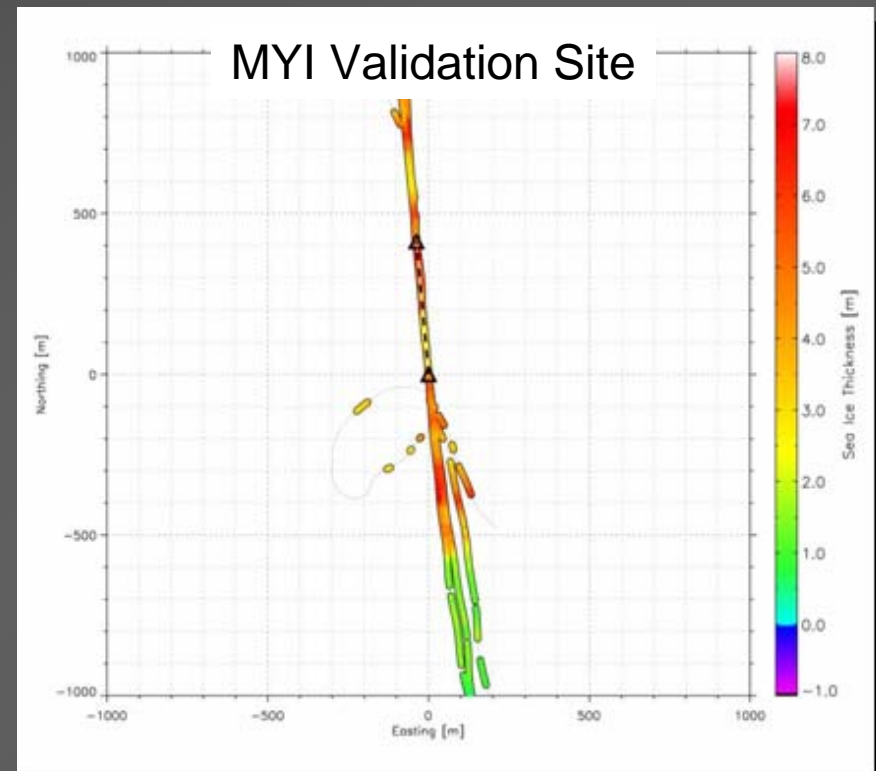
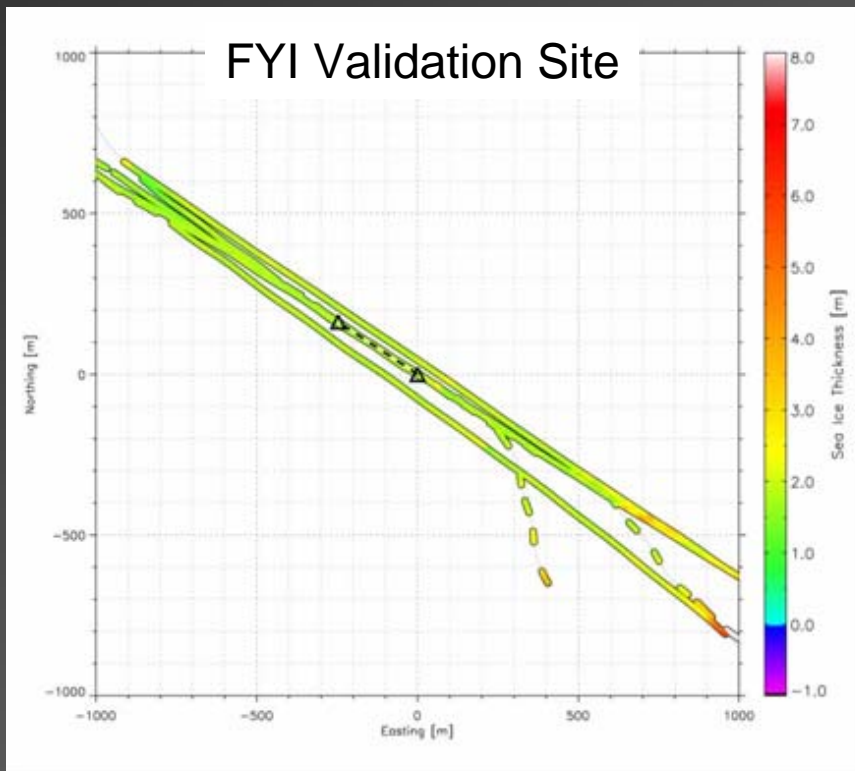


ENVISAT WSM  
2008/05/02  
23:16:18

EM Bird Track (southbound)  
2008/05/02  
21:55:53 - 23:11:25

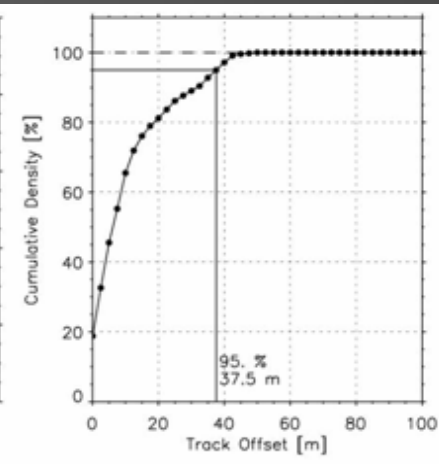
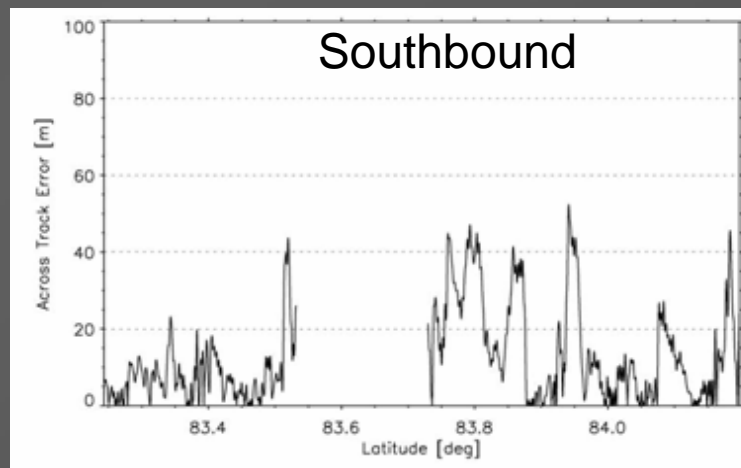
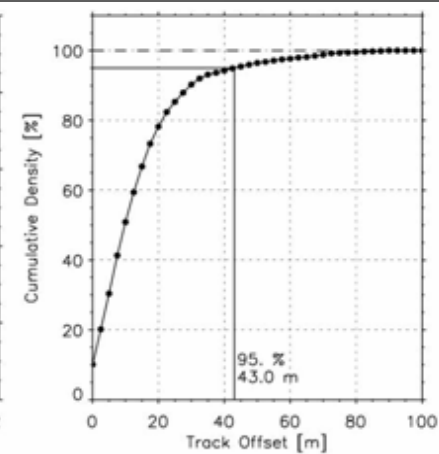
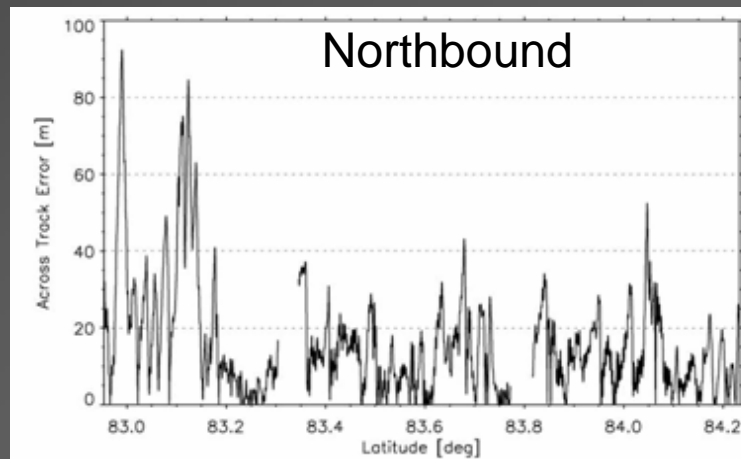
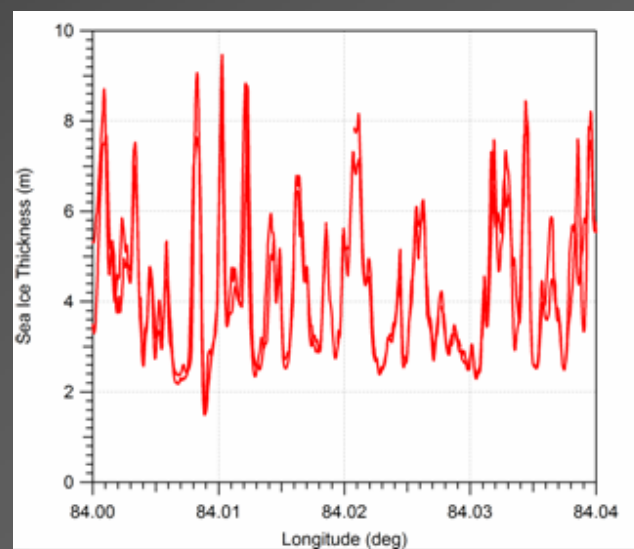


# Validation Sites



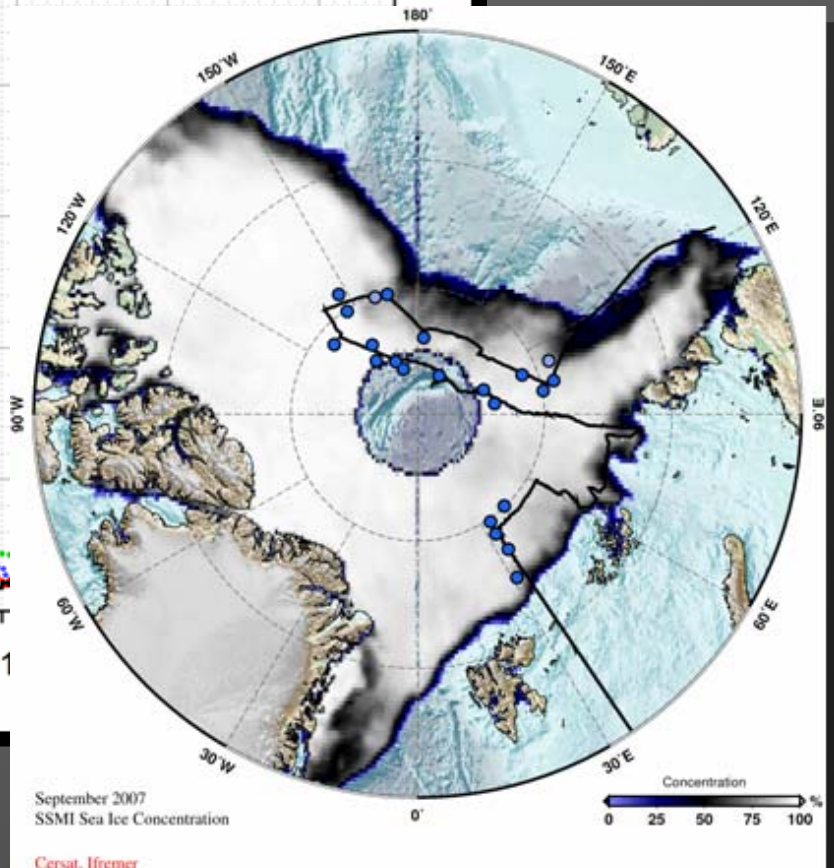
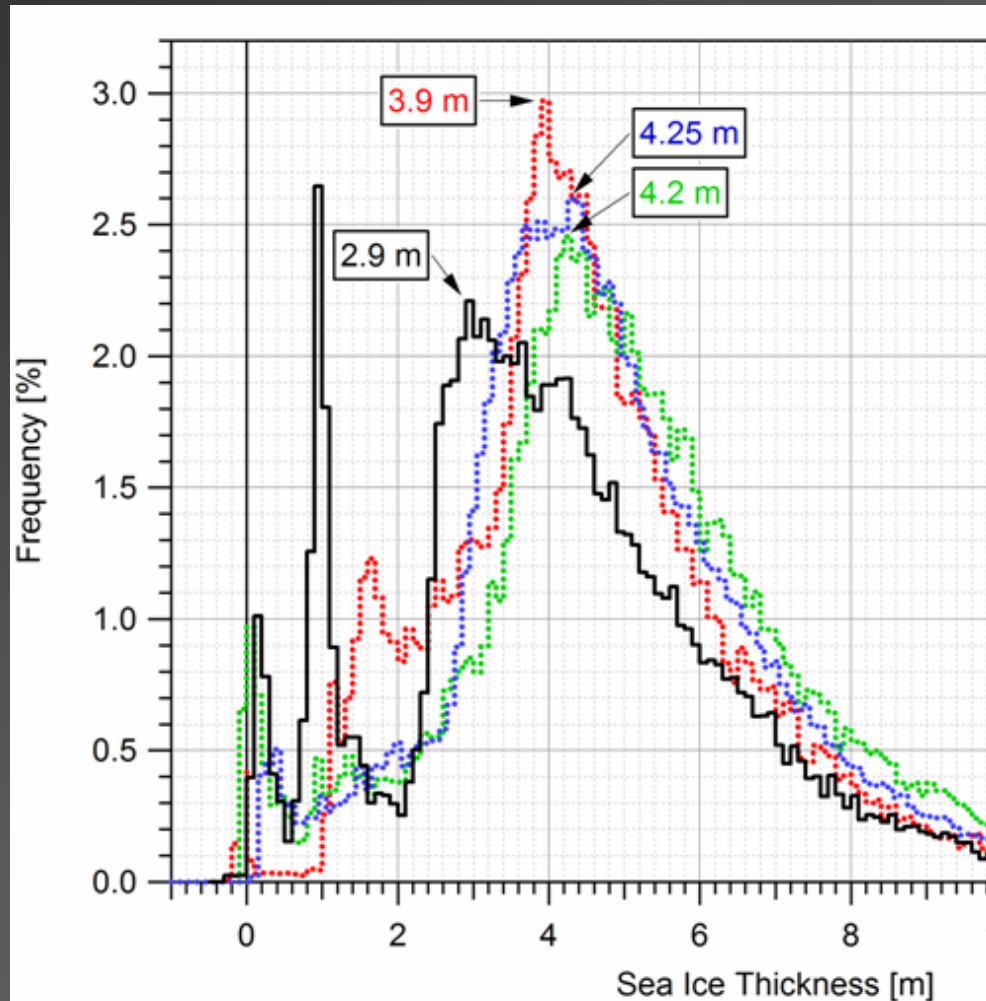
# Navigational accuracy

Coincident ASIRAS  
flight at 2008/05/02





# Sea Ice Thickness Results



# Conclusions

- EM data fully processed
- High navigational accuracy during coincident flight
- Very dense ice north of refrozen polynya  
(100% ice concentration)
- Thinner sea ice in Lincoln see compared to previous years  
(What happened to the redistributed sea ice in summer 2007?)

# ASIRAS processing status

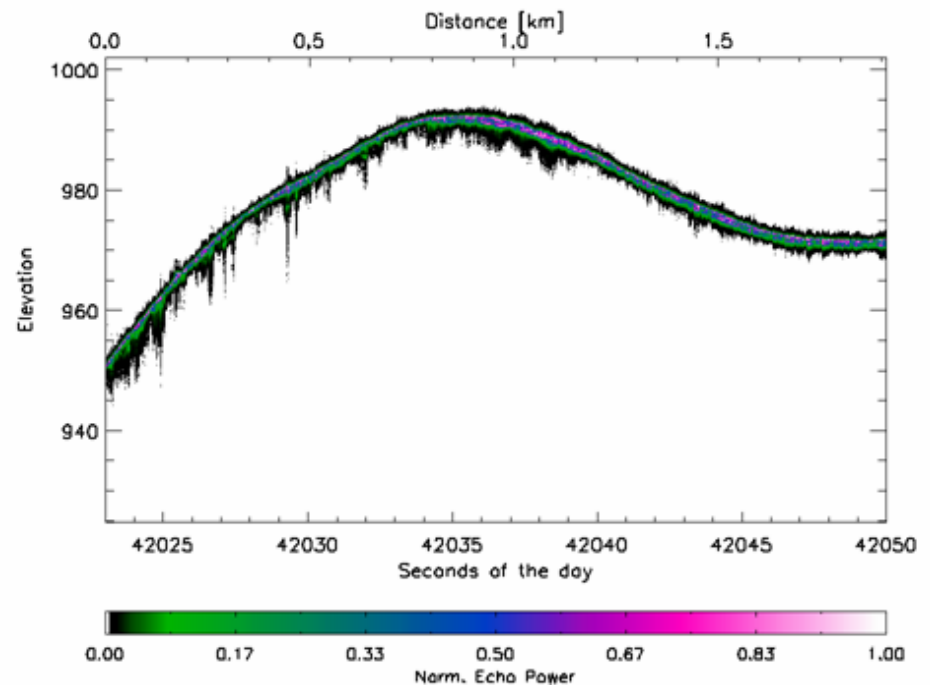
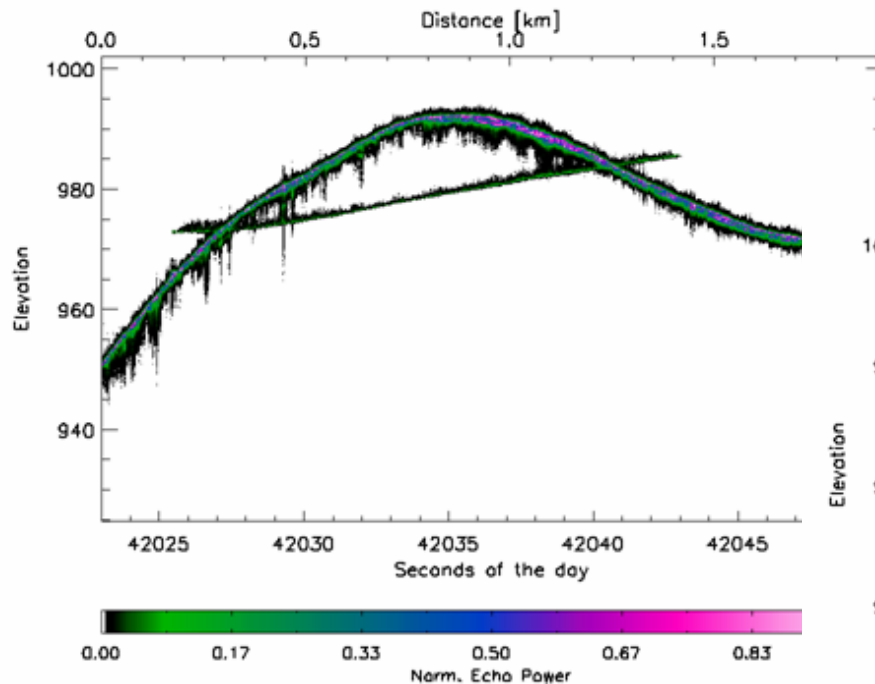
- Processor version: ASIRAS\_03\_09
- GPS and INS data delivered from DNSC to AWI
- Corner reflector analysis is in progress
- Comparison with laser scanner data not possible at current state, due to processing issues at DNSC



# ASIRAS processing status

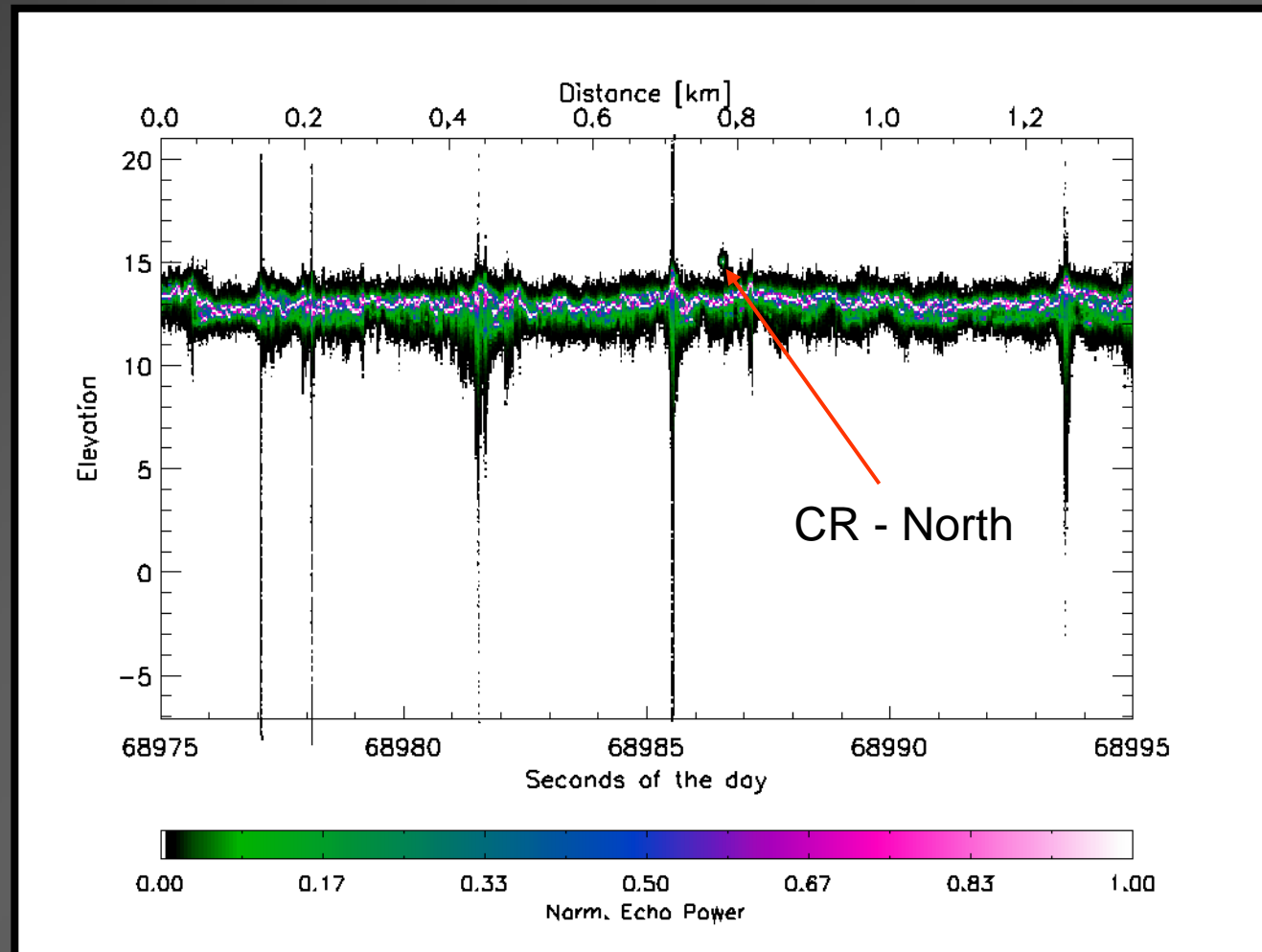
## ■ ASIRAS I & Q Bias:

can be corrected for in LAMA data by a change of parameter settings in processor configuration file



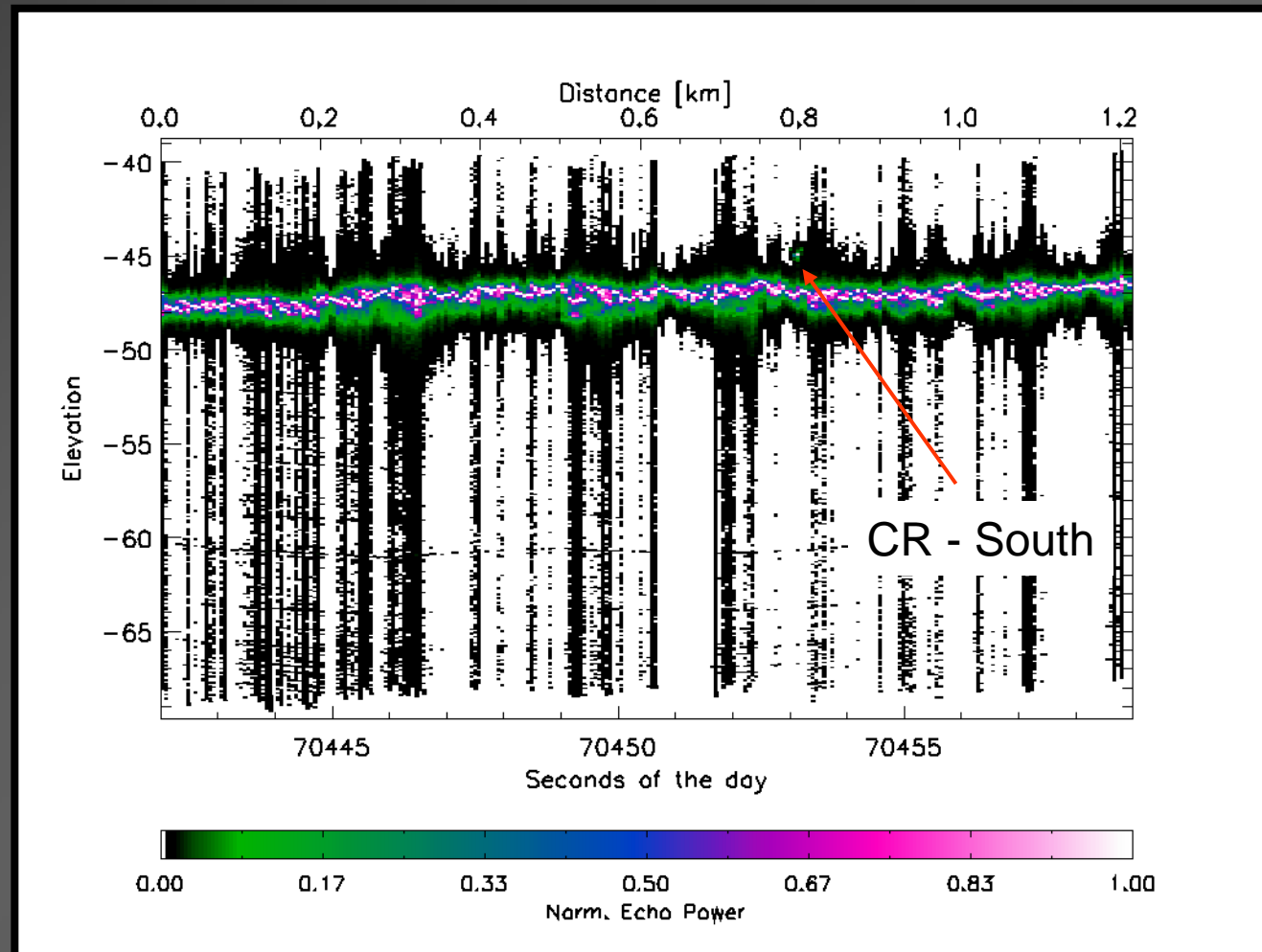
# Validation sites

- Multiyear sea ice: flights on May 1<sup>st</sup> 2008
- some hits of corner reflector in the North of the validation profile



# Validation sites

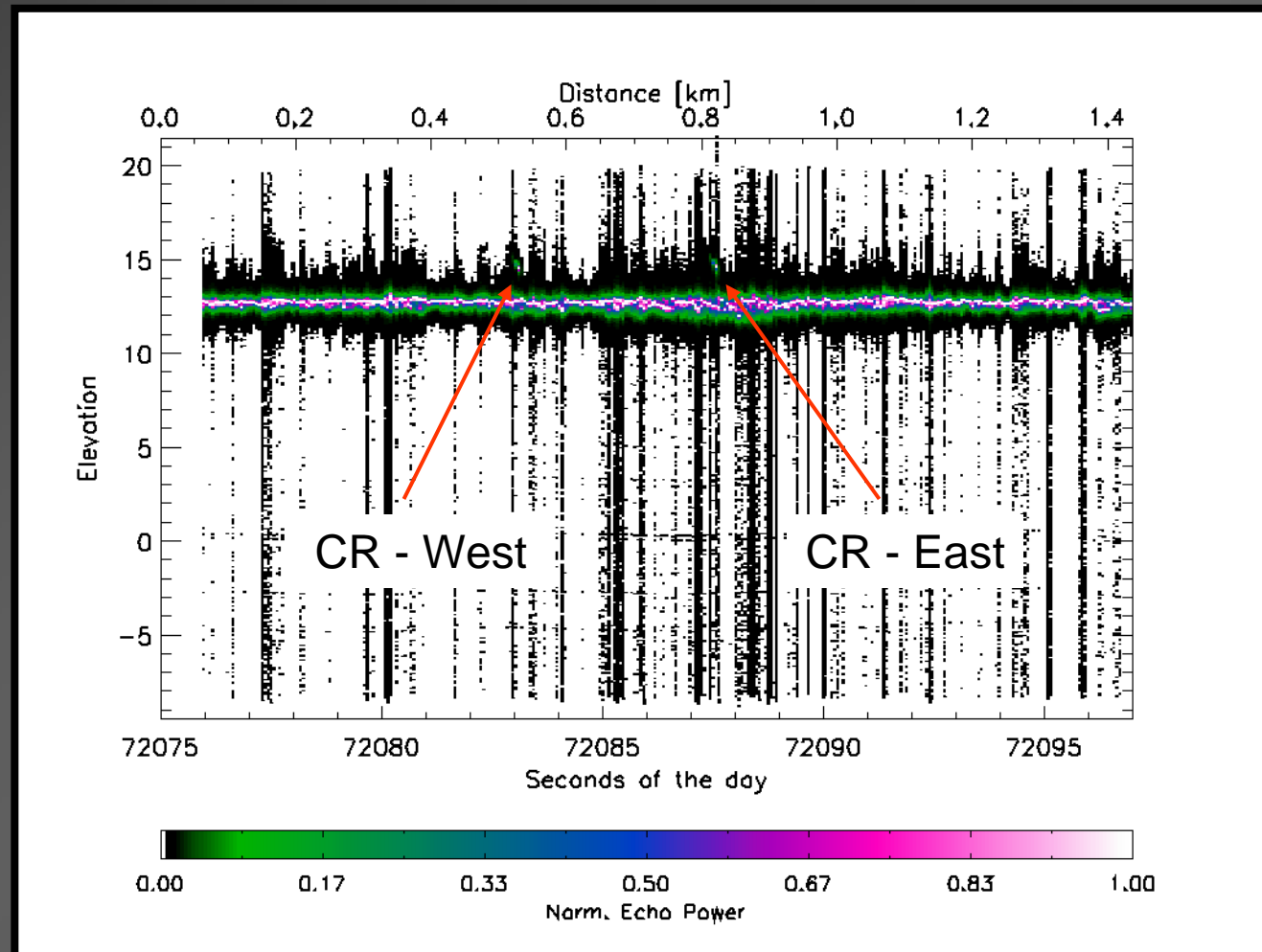
- Multiyear sea ice: flights on May 1<sup>st</sup> 2008
- some hits of corner reflector in the South of the validation profile





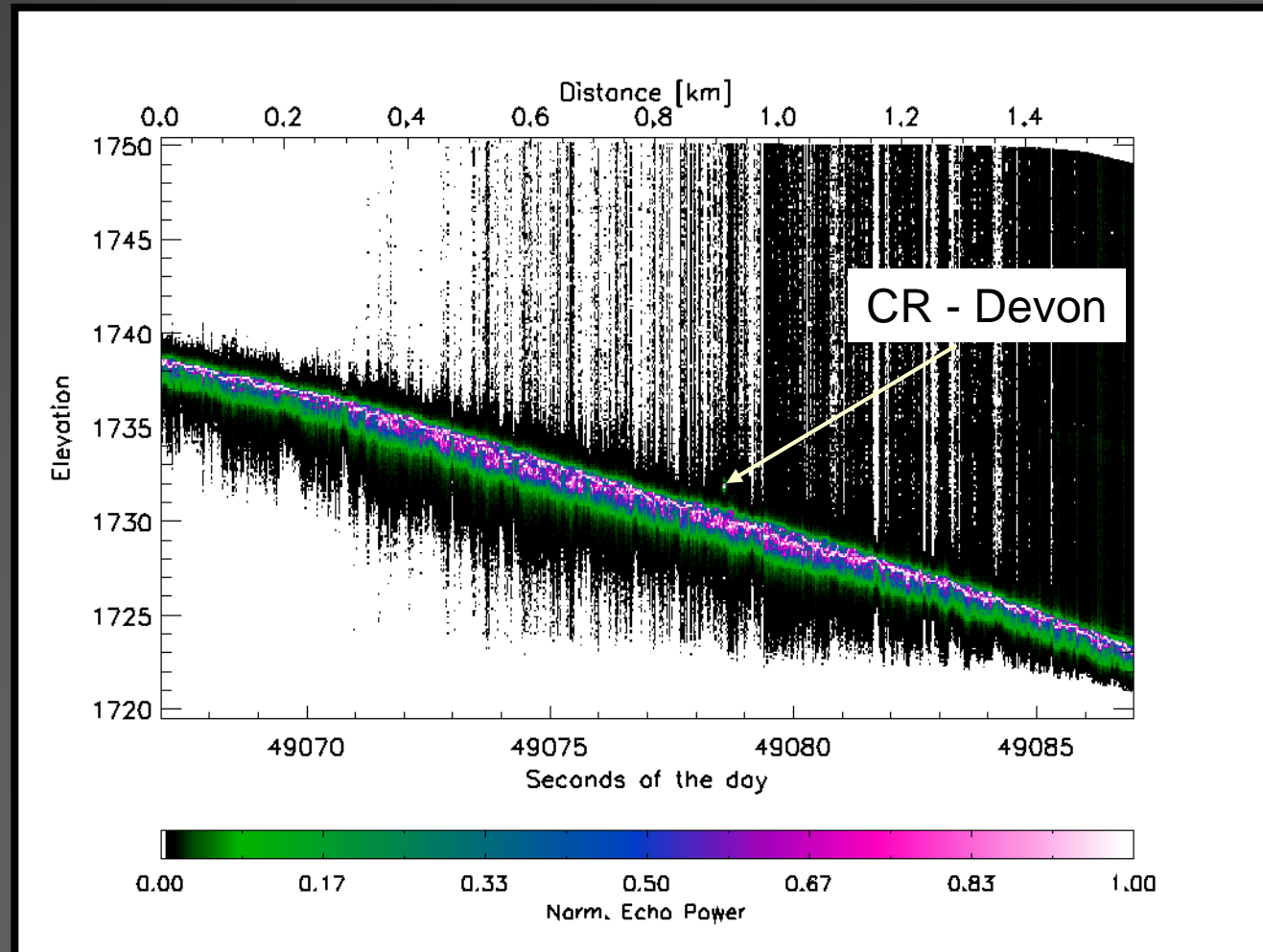
# Validation sites

- First year sea ice: flights on May 1<sup>st</sup> 2008
- some hits of both corner reflectors on the validation profile



# Validation sites

- Devon ice cap: flights on May 6<sup>th</sup> 2008
- 3 hits of corner reflector



# Validation sites

- North Greenland: flights on April 29<sup>th</sup> 2008
- no hits of corner reflector

