

Guide: Remote control to Linux computer in detector lab

1 Installation

You must install the following

1. puTTY (<https://www.putty.org/>)
2. TurboVNC Viewer (<https://www.turbovnc.org/>)

2 puTTY setup

1. Open puTTY
2. In "Session" set Host name to "10.58.7.102" and port to "22".
3. In "Connection → Data" set Auto log-in name to "detectorlab"
4. In "SSH → Tunnels" set Source port to "localhost:5900" and destination to "10.58.7.102:5900", then press add. Repeat with set Source port to "localhost:5901" and destination to "10.58.7.102:5901", then press add.
5. In "Session", save the session.

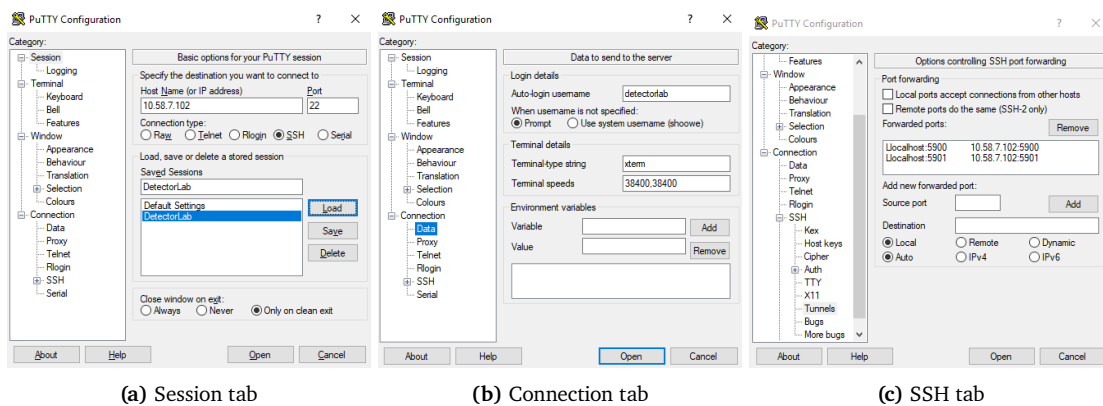


Figure 1: puTTY setup

3 Remote connection

1. Load your saved puTTY session and press "Open".
2. In the pop-up window, login using the password to the detector lab computer.
3. Type 'x11vnc' and press enter. The server starts.

4. From the server window, note if it says 5900 or 5901.
5. Start TurboVNC viewer.
6. In VNC Server type: "localhost:590X", matching the number displayed in your server window.
7. DONE, you are now connected to the detector lab linux computer.